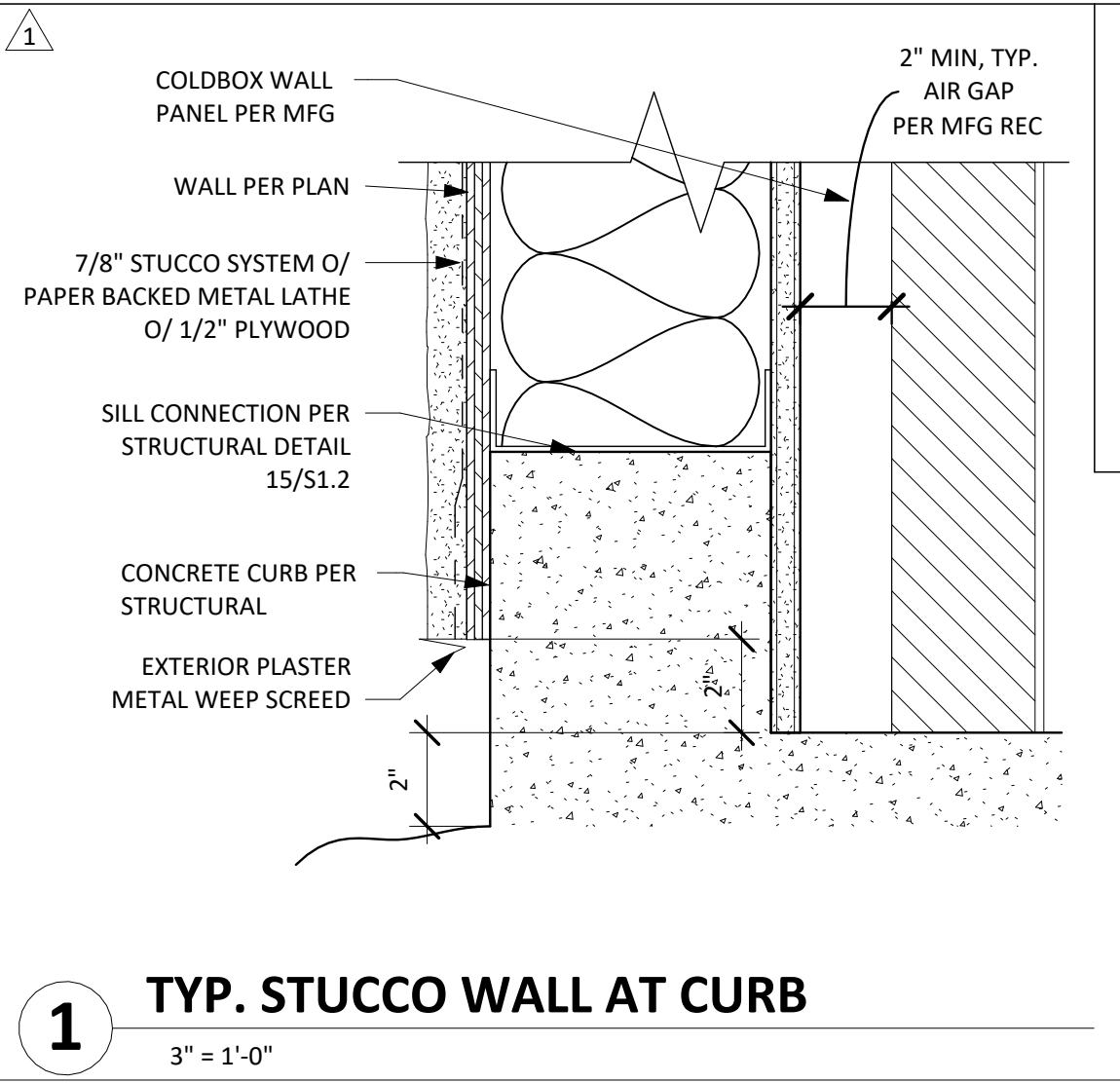
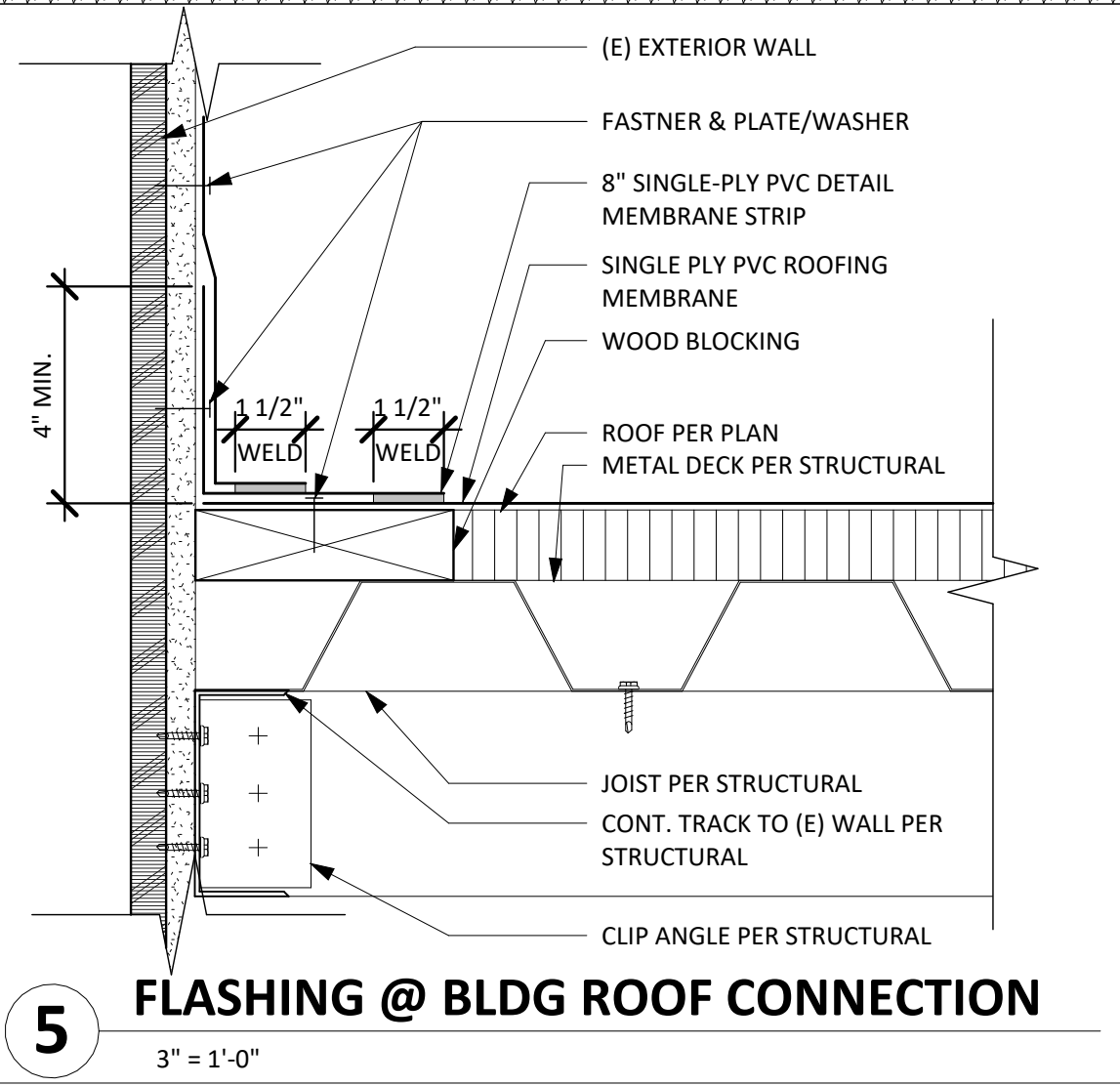
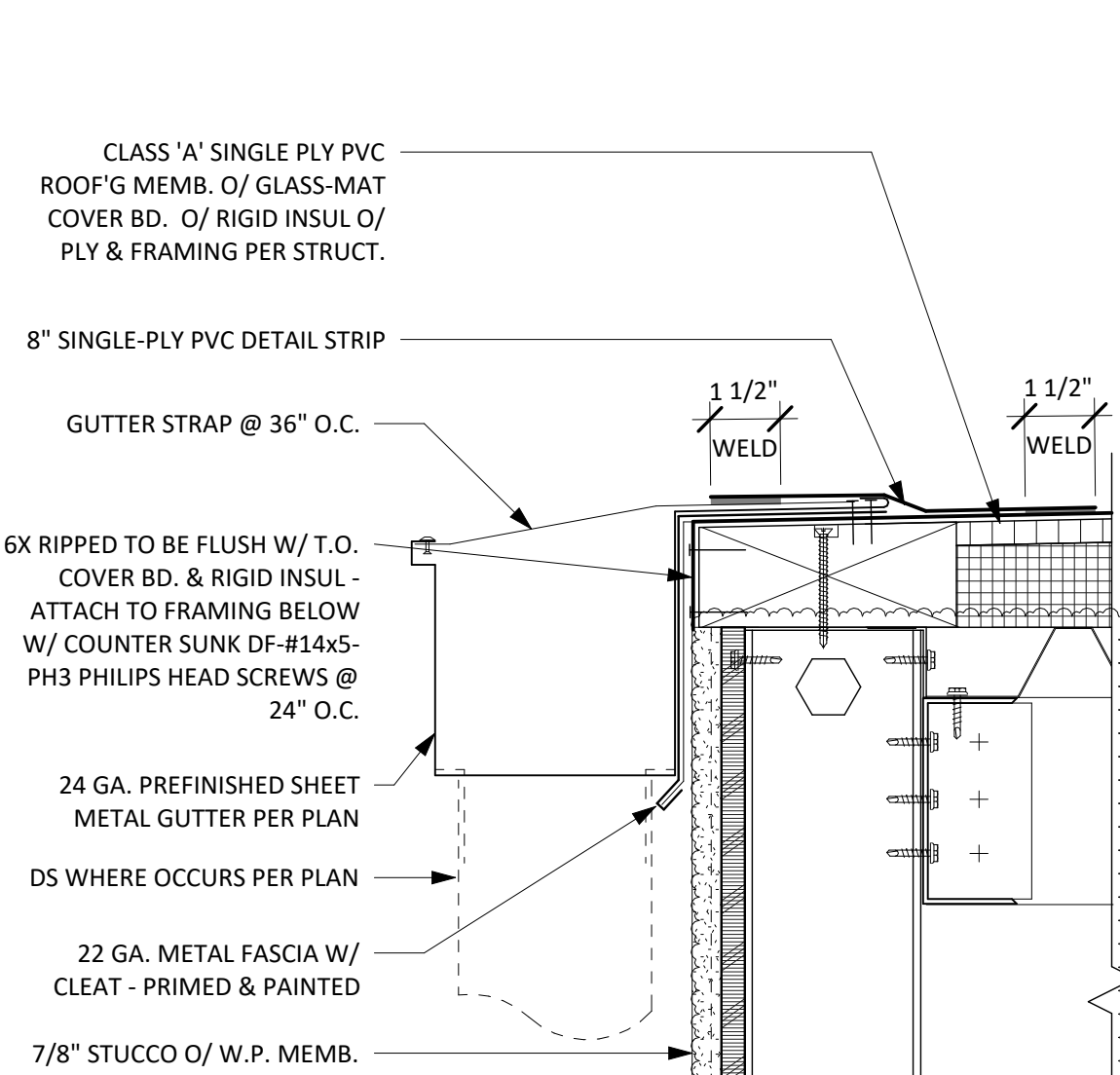
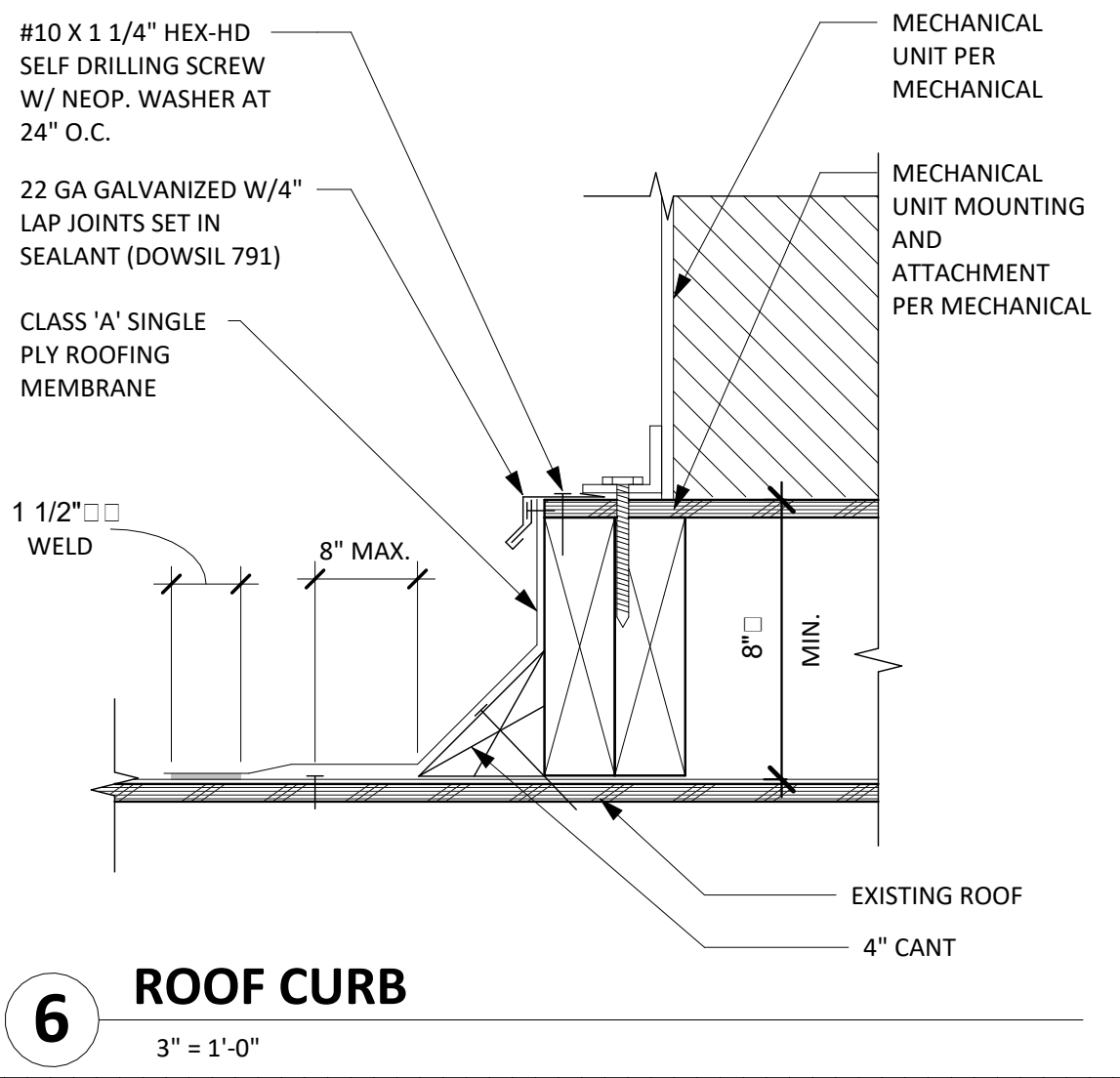


WALL SCHEDULE						
TYPE	DESCRIPTION	STRUCTURAL MATERIAL	EXTERIOR FINISH	INTERIOR FINISH	FIRE RATING	INSULATION
1A	EXTERIOR, 1 HR, GYP O/METAL STUD	2X4 METAL STUD - 400S162-54	3 COAT 7/8" STUCCO SYSTEM O/ PAPER BACKED METAL LATHE O/ 1/2" PLYWOOD	N/A	1 HR	R-13
2A	INTERIOR COLD BOX PANEL	PER MFG.	PER MFG.	PER MFG.	PER MFG.	PER MFG.
<div><div><div>7/8" STUCCO SYSTEM O/ PAPER BACKED METAL LATHE</div><div>BUILDING PAPER</div><div>1/2" PLYWOOD</div><div>2x4 METAL STUD WALL PER SCHEDULE</div><div>R-13 BATT INSULATION</div><div>5/8" TYPE X GYP.</div></div><div>WALL TYPE 1A</div></div>						

- WALL SCHEDULE NOTES**
- INSULATION MATERIAL SHALL MEET REQUIREMENTS SET FORTH IN CALIFORNIA ENERGY CODE SECTION 110.8
 - METAL STUDS: CLARK DIETRICH METAL STUDS & TRACK, ICC ES 1166P
 - AT CEILING PROVIDE SOUND BATT INSULATION BETWEEN JOISTS
 - AT WET LOCATIONS PROVIDE MOISTURE RESISTENT GYPSUM BOARD



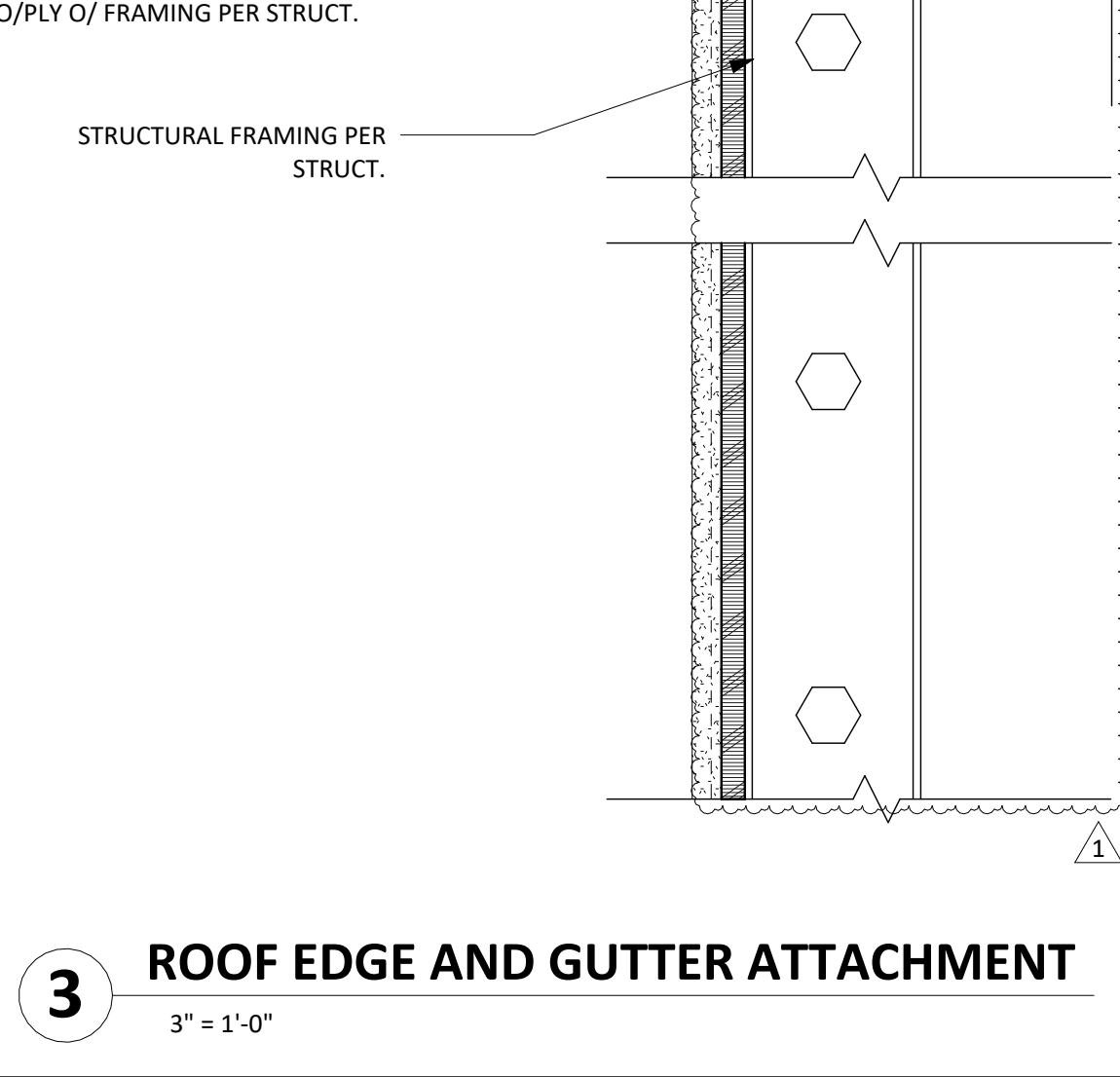
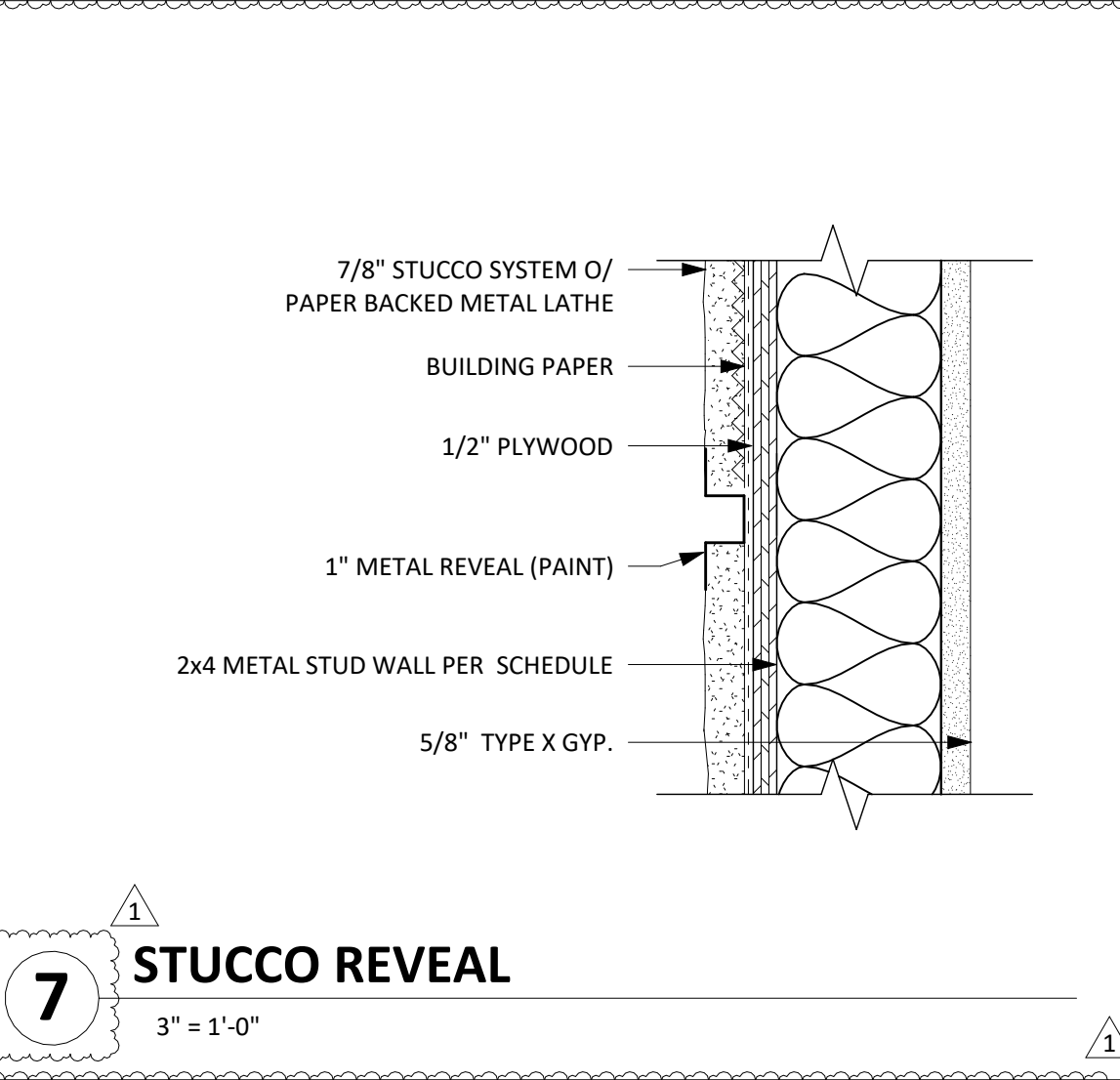
DOOR SCHEDULE													
NO.	TYPE	OPERATION	LOCATION	OPENING		DOOR			FRAME			*PAINT TO MATCH EXISTING	
				WIDTH	HEIGHT	MTRL	EXT FINISH	INT FINISH	MTRL	EXT FINISH	INT FINISH	FIRE RATING	COMMENTS
101	A	SWING	VESTIBULE	3'-4"	7'-0"	HM	PT*	PT*	HM	PT*	PT*	-	EXISTING, SALAVAGE AND RE-INSTALL.
102	B	SWING	FREEZER	PER MFG.	PER MFG.	PER MFG.	PER MFG.	PER MFG.	PER MFG.	PER MFG.	PER MFG.	PER MFG.	PER MFG.
103	B	SWING	COOLER	PER MFG.	PER MFG.	PER MFG.	PER MFG.	PER MFG.	PER MFG.	PER MFG.	PER MFG.	PER MFG.	PER MFG.



FINISH SCHEDULE						
LOCATION	FLOOR FINISH	WALLS				CEILING FINISH
		NORTH	EAST	SOUTH	WEST	
VESTIBULE	EPOXY	N/A	PT*	N/A	PT*	INTEGRAL EPOXY .PER MTG

FINISH LEGEND	
PT	EPOXY
GS	EPOXY
GS	GALVANIZED STEEL

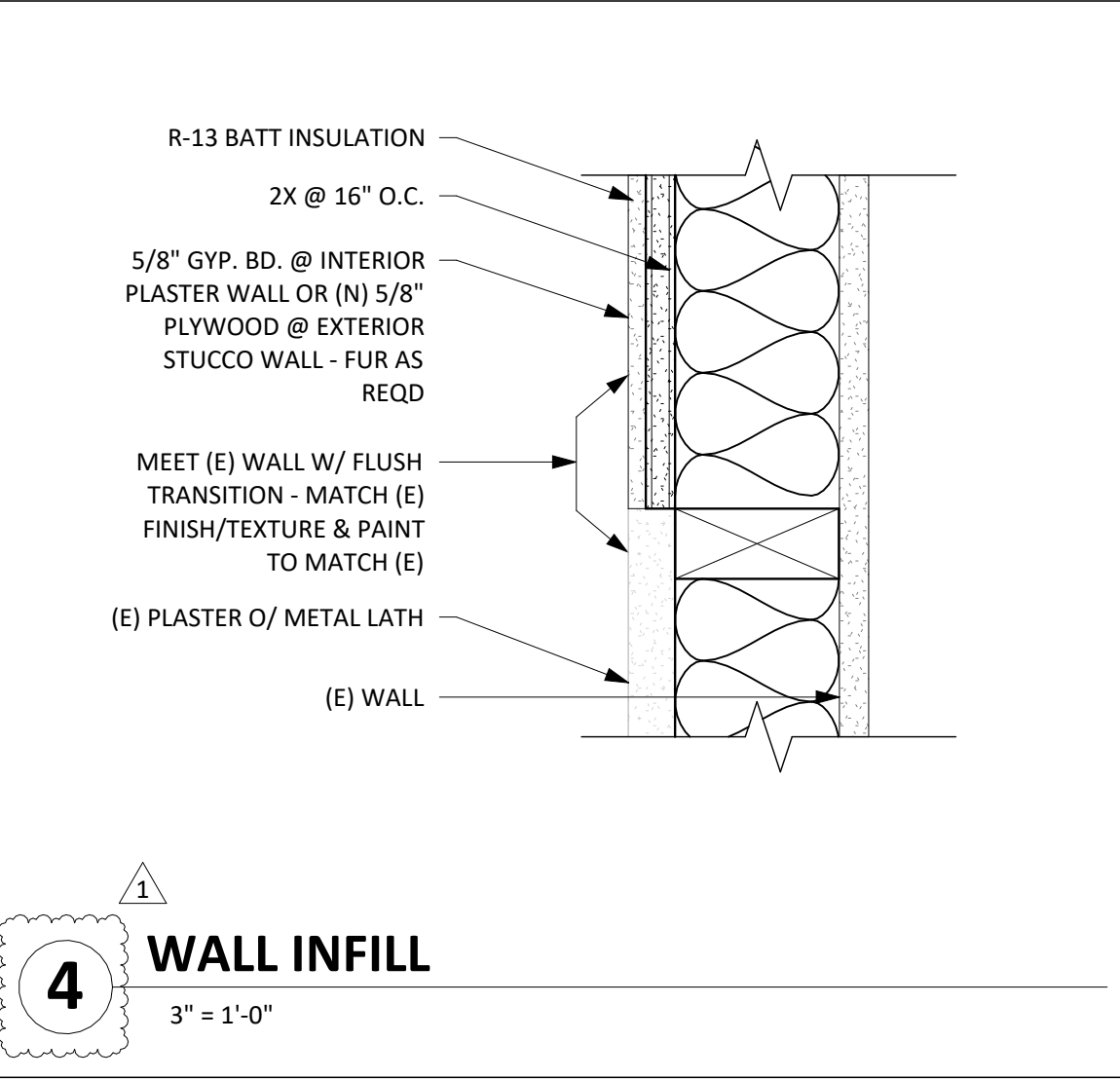
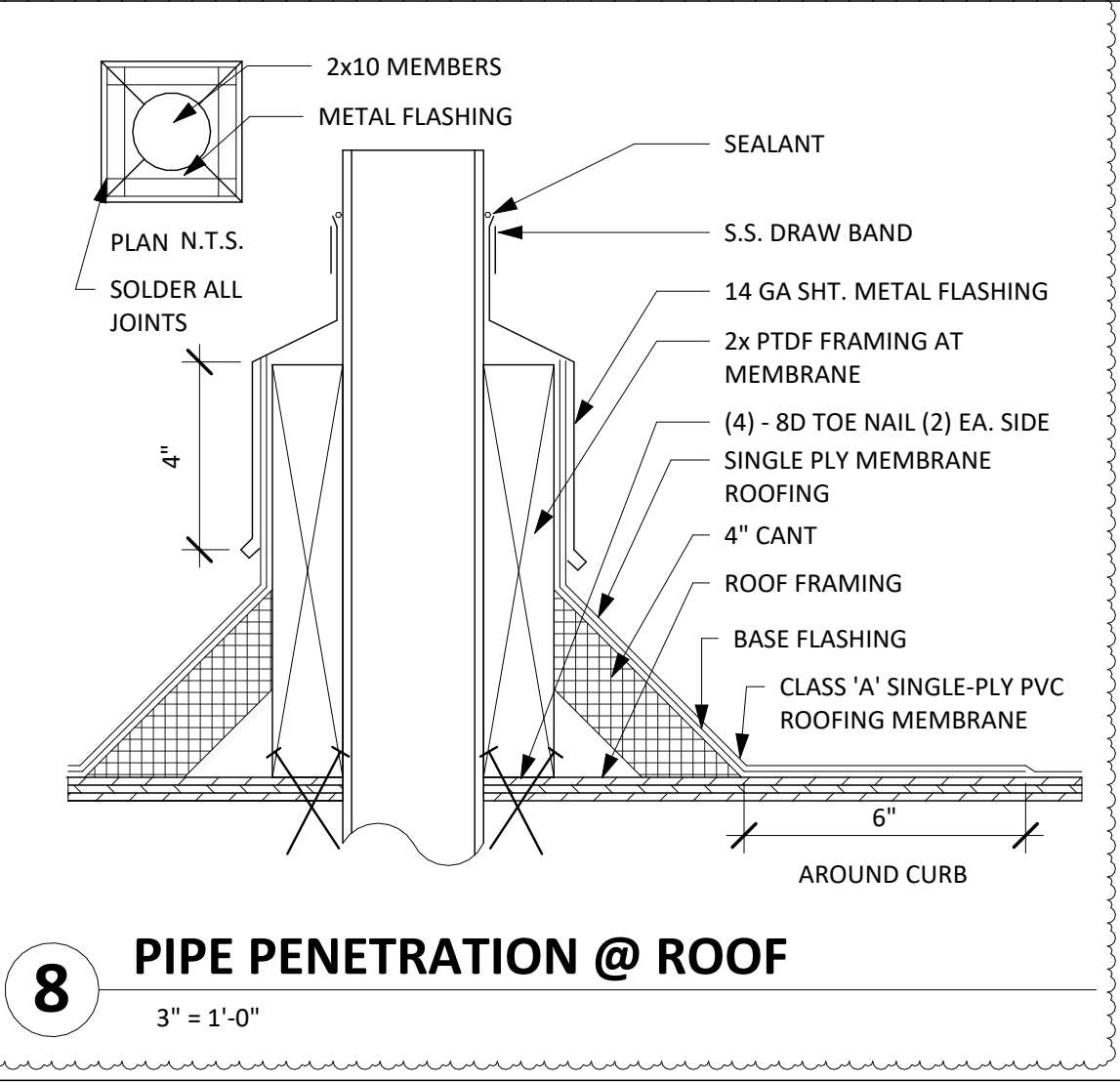
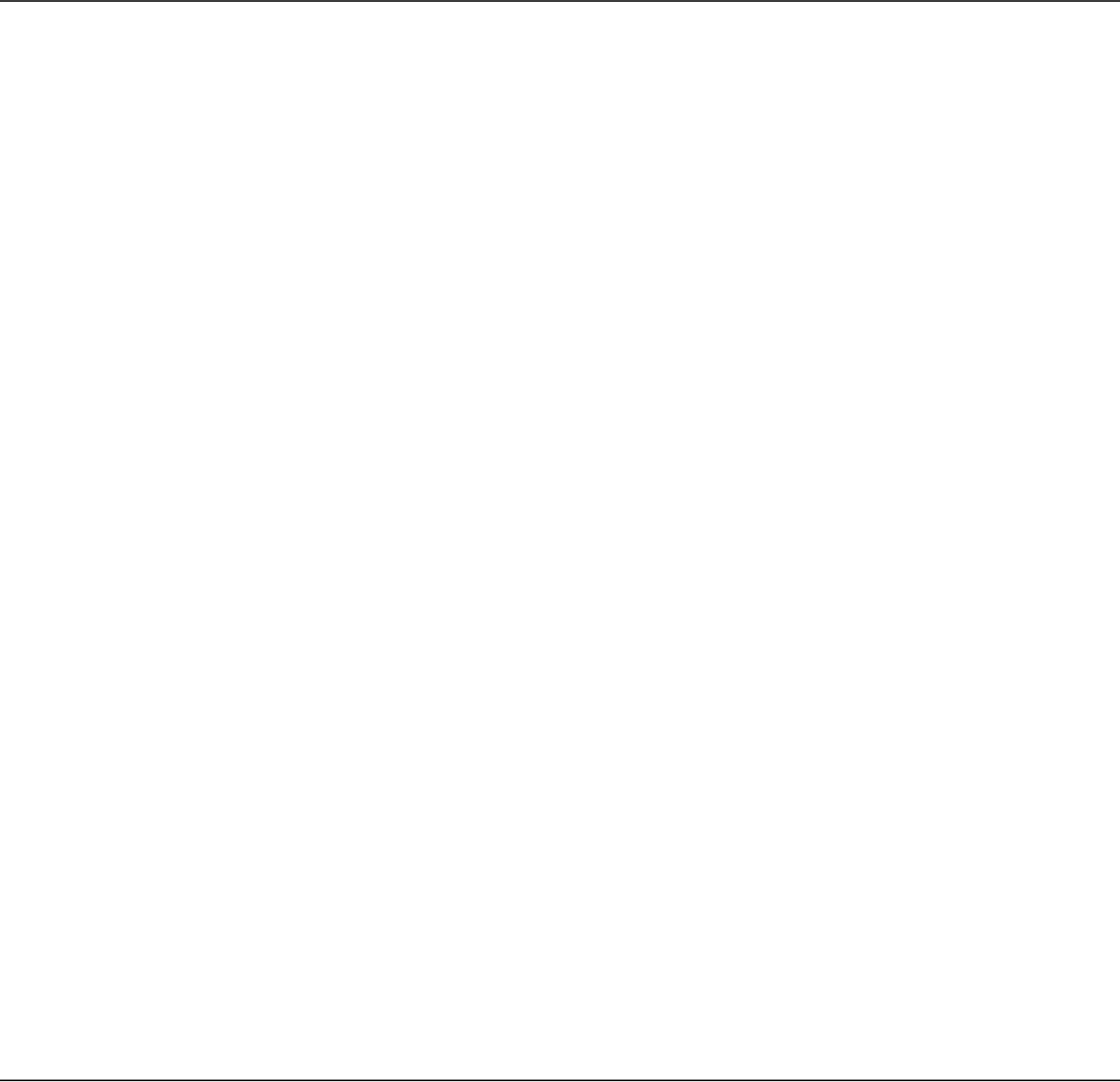
MATERIALS LEGEND	
HM	HOLLOW METAL



FINISH SCHEDULE						
LOCATION	FLOOR FINISH	WALLS				CEILING FINISH
		NORTH	EAST	SOUTH	WEST	
VESTIBULE	EPOXY	N/A	PT*	N/A	PT*	INTEGRAL EPOXY .PER MTG

FINISH LEGEND	
PT	EPOXY
GS	EPOXY
GS	GALVANIZED STEEL

MATERIALS LEGEND	
HM	HOLLOW METAL



FOR DSA REVIEW ONLY - NOT FOR CONSTRUCTION

FOR DSA REVIEW ONLY - NOT FOR CONSTRUCTION

oabr
OBR ARCHITECTURE
ARCHITECTURE ART EVENT

SAN DIEGO UNIFIED DISTRICT SCHOOLS

BOARD OF EDUCATION

oBrARCHITECTURE
2419 EL CAJON BLVD., SAN DIEGO, CA 92104

EXTERIOR DETAILS, WALLS, DOORS AND FINISHES SCHEDULES

SAN DIEGO UNIFIED SCHOOL DISTRICT
KITCHEN MODIFICATIONS GROUP 6
BELL MIDDLE SCHOOL
620 BRIARWOOD RD,
SAN DIEGO, CA 92139
DSA SUBMITTAL SET

PROJECT NO. SDUF-006A

R.S. A.P.

FILE NAME

DATE 04/09/2025

REVISIONS
1 04/23/25

SHEET NO.
A8.1

4/23/2025 4:32:55 PM Copyright obrARCHITECTURE, INC.